



Wanli Tire Corporation Limited  
Headquarters: NO.3 Wanli Road, Aotou Town, Conghua District, Guangzhou, P.R.China  
Marketing Center :Guangzhou Intelligent Manufacturing Park, No.620, Shibe Industrial Road, Dashi Street, Panyu District, Guangzhou, Guangdong, P.R.China.  
Website: [www.wanli-global.com](http://www.wanli-global.com) Sales@wanlitire.cn



# 2023 TIRE CATALOGUE

Passenger Car, SUV, Light Truck, All Season Tires,  
Winter Tires

WANLI TIRE CORPORATION LIMITED

## Company profile

### About us

Wanli Tire Co., Ltd. is controlled directly by Guangzhou Industrial Investment Holding Group Co., Ltd. It has three production bases, Conghua, Hefei and Diamond. The current production capacity is 30.4 million sets, including 24 million PCR tires, 2.4 million TBR tires and 4 million two-wheeled tires, with an output value of 5 billion yuan.

### Brand

"WANLI", "SUNNY", "APTANY" and "MILEVER" are four tire brands Wanli Tire Corporation Limited sells in overseas market, Wanli Tire Corporation constantly develop and enrich the product line with the change of market, which has covered nine series of passenger tire products of Economic, Comfort, Racing tire, UHP, SUV on/off-road, LT, Run Flat tire, Winter tire, and All Season tire with more than 6,000 sizes which can meet all requirements from different markets. Our major products incorporate patterns like Comfort series SP026, UHP series SA302 SUV series SU025, etc.

## R & D Strength

WANLI has a national-level enterprise technology center, a nationally recognized laboratory, a contracted laboratory of the China Rubber Association, a post-doctoral research station, a Guangdong academician expert enterprise workstation, and a Guangdong engineering technology research and development center. With a full range of simulation analysis capabilities and the trial production and testing capabilities of rubber tire, it has a series of international advanced R&D facilities, and has established advanced laboratories including tire rolling resistance, rigidity, six-component force, high-speed uniformity, noise and vibration, modal analysis, etc., making its R&D capabilities at the leading level in China.

## Product Strength

WANLI is committed to providing consumers with high-quality tires, and officially passed the TÜV Rheinland test, becoming the first tire enterprise in China to pass the TÜV Rheinland test. In 2016, Wanli Tire Comfort Series H220 was included in the first and second batches of "Automotive Green Tire Grade Certification" issued by China Automotive Technology and Research Center, which shows that WANLI's product quality and technical strength are in the leading position in China.

## Market Recognition

Wanli Tire earns a good reputation in domestic and overseas markets, and its products sell well in more than 150 countries and regions around the world. In terms of OE market, WANLI supply more than 80 models of more than 20 OEMs, including Dongfeng Citroen / Peugeot, Zhengzhou Nissan, Beijing Hyundai, GAC Trumpchi, GAC Honda, JAC, GAC Hino, Nanjing Jinlong, Zhuzhou CRRC and Bombardier.

## Future

In the future, WANLI will continue to make efforts in R&D, manufacturing, branding and sales to build the first large state-owned enterprise covering rubber parts for the whole vehicle industry in China. It is planned to achieve an output value of 10 billion yuan by 2025, ranking among the top five in China's tire industry and the top three in technological research and development in China's tire industry.



# ENJOY THE QUALITY LIFE WITH PEACE AND COMFORT



Comfortable and quiet, balanced performance,  
energy saving and environmental friendly

Suitable for small and compact cars

**MILECOMFORT**

### MUTE TECHNOLOGY WITH ALL AROUND NOISE REDUCTION

The tread adopts "staggered pitch crossover technology" to significantly reduce tire noise.

The tread grooving is specially treated with the latest "3D self-guiding flow technology", which provides soft shock and smooth air conduction, enhancing quiet and comfortable performance, and first-class driving quality.

The closed tire shoulder groove design blocks the air flow between the pattern groove and reduces the noise during driving.

### ENERGY-EFFICIENT FORMULA WITH MILEAGE WORRY-FREE

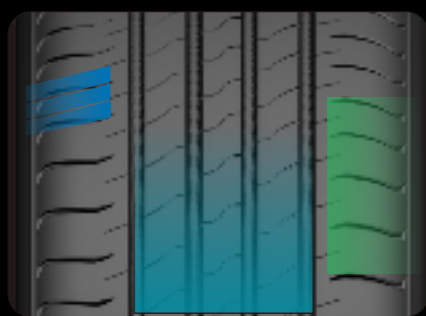
The tread formula adopts the latest high-silicon tread formula design, which not only helps to improve the grip performance of the tire, but also effectively reduces the roll resistance and improves the driving range.

### BALANCED PERFORMANCES WITH ADVANCED TECHNOLOGY

Simulation helps optimize the ground pressure to improve driving stability and shorten braking distance.

High rigidity ribs in the middle improve the handling performance, wear performance and comfort performance

Four circumference to the main trench provides good drainage performance and anti-skid ability, ensuring the wet land driving handling.



Inch:13-16  
Speed rating: T-V  
Series:50-80

Inch	Aspect Rating	Size	Load Index	Speed Rating	Section Width(mm)	Overall Diameter(mm)	Max Air Pressure(KPa)	Load Capacity(kg)
13	60	175/60R13	77	T	177	540	250	412
	65	165/65R13	77	T	170	544	250	412
		175/65R13	80	T	177	558	250	450
	70	145/70R13	71	T	150	534	250	345
		165/70R13	79	T	170	562	250	437
		175/70R13	82	T	177	576	250	475
	75	185/70R13	86	T	189	590	250	530
	80	175/75R13	84	T	177	584	250	500
165/80R13	83	T	165	594	240	487		
14	60	185/60R14	82	H	189	578	250	475
	65	175/65R14	82	T	177	584	250	475
		185/65R14	86	H	189	596	250	530
	70	175/70R14	84	T	177	602	250	500
		185/70R14	88	T	189	616	250	560
	195/50R15	82	V	201	577	250	475	
15	55	195/55R15	85	V	201	595	250	515
	60	185/60R15	88/XL	V	189	603	290	560
		195/60R15	88	H	201	615	250	560
		195/60R15	88	V	201	615	250	560
		205/60R15	91	H	209	627	250	615
	65	185/65R15	88	H	189	621	250	560
		195/65R15	91	H	201	635	250	615
		205/65R15	94	V	209	647	250	670
	70	205/70R15	96	H	209	669	250	710
	16	55	195/55R16	87	V	201	620	250
205/55R16			91	V	214	632	250	615
60		205/60R16	92	H	209	652	250	630
		215/60R16	95	H	221	664	250	690
65		215/65R16	98	V	221	686	250	750
12	70	145/70R12	69	T	coming soon	-	-	-
		155/70R12	73	T	coming soon	-	-	-
		165/70R12	77	T	coming soon	-	-	-
13	65	155/65R13	73	T	coming soon	-	-	-
	70	155/70R13	75	T	coming soon	-	-	-
	80	145/80R13	75	T	coming soon	-	-	-
14	55	185/55R14	80	H	coming soon	-	-	-
	60	175/60R14	79	H	coming soon	-	-	-
		195/60R14	86	H	coming soon	-	-	-
	65	205/60R14	88	H	coming soon	-	-	-
		195/65R14	89	H	coming soon	-	-	-
70	195/70R14	91	H	coming soon	-	-	-	
15	55	205/70R14	95	H	coming soon	-	-	-
		205/55R15	88	V	coming soon	-	-	-
	60	155/60R15	74	T	coming soon	-	-	-
	65	145/65R15	72	T	coming soon	-	-	-
70	225/70R15	100	H	coming soon	-	-	-	



# NEW MUTE STANDARD AND NEW DRIVING FIELD

## HARMONIC

# MP270

Inch	Aspect Rating	Size	Load Index	Speed Rating	Section Width(mm)	Overall Diameter(mm)	Max Air Pressure(KPa)	Load Capacity(kg)	
13	65	165/65R13	77	T	170	544	250	412	
		165/70R13	79	T	170	562	250	437	
	70	175/70R13	82	T	177	576	250	475	
		185/70R13	86	T	189	590	250	530	
		155/80R13	79	T	157	578	240	437	
14	60	165/60R14	75	H	170	554	250	387	
		185/60R14	82	H	189	578	250	475	
	65	155/65R14	75	T	157	558	250	387	
		165/65R14	79	T	170	570	250	437	
		175/65R14	82	T	177	584	250	475	
		185/65R14	86	H	189	596	250	530	
	70	165/70R14	85/XL	T	170	588	290	515	
		175/70R14	84	T	177	602	250	500	
		185/70R14	88	T	189	616	250	560	
		50	175/50R15	75	H	182	557	250	387
			185/50R15	79	V	194	566	250	437
15	55	195/50R15	82	V	201	577	250	475	
		185/55R15	82	V	194	585	250	475	
		195/55R15	85	H	201	595	250	515	
	60	195/55R15	85	V	201	595	250	515	
		165/60R15	81/XL	H	170	579	290	462	
		175/60R15	81	H	177	591	250	462	
		185/60R15	88/XL	V	189	603	290	560	
	65	195/60R15	88	H	201	615	250	560	
		205/60R15	91	H	209	627	250	615	
		185/65R15	88	H	189	621	250	560	
195/65R15		91	H	201	635	250	615		
205/65R15		94	V	209	647	250	670		
215/65R15		100/XL	H	221	661	290	800		
70		205/70R15	96	H	209	669	250	710	
	215/70R15	98	H	221	683	250	750		
16	55	185/55R16	83	V	194	610	250	487	
		195/55R16	87	V	201	620	250	545	
		205/55R16	91	V	214	632	250	615	
		215/55R16	93	V	226	642	250	650	
	60	225/55R16	99/XL	V	233	654	290	775	
		195/60R16	89	H	201	640	250	580	
		205/60R16	92	H	209	652	250	630	
		215/60R16	95	H	221	664	250	690	
		225/60R16	98	V	228	676	250	750	
	65	215/65R16	98	V	221	686	250	750	
	17	55	225/55R17	97	V	233	680	250	730

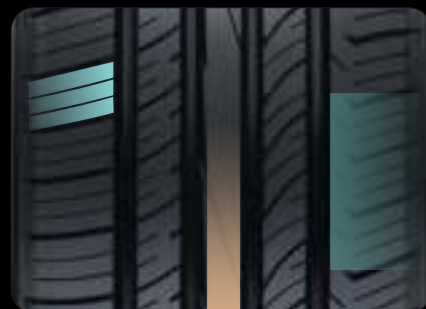
# MP270

## Immersed low noise and light sound

Suitable for small and compact cars **HARMONIC**

### Performance balancing:

The finite element simulation technique is used to simulate and optimize the tire contour design in order to obtain the optimal imprint shape and uniform grounding pressure distribution, which ensures better handling performance, comfortable ride and uniform wear appearance.



Inside-Soft tyre pattern block facilitates ride comfort and wetland performance;

Middle-The middle tread pattern of the tire adopts a smooth strip design with a high rigidity of the pattern block, which helps to improve the control performance.

Outside-The closed shoulder tread design can improve the rigidity and anti-slip performance of tire shoulder tread.



Inch:13-17  
Speed rating: T-V  
Series:50-80



SPORT PRO

MA352



BORN FOR FREE DRIVING

MA352

Safety, control, energy saving

Suitable for Medium/medium large EV models

SPORT PRO



**OUTSTANDING CONTROL , FREE DRIVING**

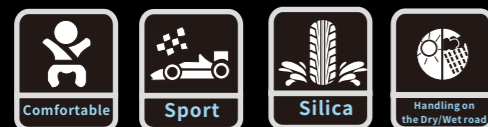
Asymmetric tread design, different division of internal and external tread increasing the friction of tire and the ground, reducing the risks of sideslip from emergency braking, to bring the ultimate grip performance, and improve vehicle driving stability and safety.

**ENERGY EFFICIENT FOR ENOUGH MILEAGE**

The tread adopts FET formula design. The more ordered distribution of silicon particles reduces the friction, which will greatly improve the energy saving performance.

**MULTIPLE PROTECTION FOR DRIVING SAFETY**

The center wide-groove drainage system design helps the rapid drainage, effectively enhances the stability on wet land control and braking performance, protects the safety for driver regardless of the wind and rain.



Inch:17-20  
Speed rating:V-W  
Series:40-55

Inch	Aspect Rating	Size	Load Index	Speed Rating	Section Width(mm)	Overall Diameter(mm)	Max Air Pressure(KPa)	Load Capacity(kg)
17	40	205/40ZR17	84/XL	W	212	596	290	500
		205/45ZR17	88/XL	W	206	616	290	560
		215/45ZR17	91/XL	W	213	626	290	615
	45	225/45ZR17	94/XL	W	225	634	290	670
		205/50ZR17	93/XL	W	214	638	290	650
		215/50ZR17	95/XL	W	226	648	290	690
	50	225/50ZR17	98/XL	W	233	658	290	750
		215/55ZR17	98/XL	W	226	668	290	750
		225/55ZR17	101/XL	W	233	680	290	825
55	235/55ZR17	103/XL	W	245	690	290	875	
	40	225/40ZR18	92/XL	W	230	637	290	630
		235/40ZR18	95/XL	W	241	645	290	690
245/40ZR18		97/XL	W	248	653	290	730	
18	45	225/45ZR18	95/XL	W	225	659	290	690
		235/45ZR18	98/XL	W	236	669	290	750
		245/45ZR18	100/XL	W	243	677	290	800
	50	235/50ZR18	97	W	245	693	250	730
	55	235/55ZR18	100	W	245	715	250	800
20	45	245/45ZR20	103/XL	W	243	728	290	875
	50	265/50R20	111/XL	V	277	774	290	1090
16	45	215/45R16	90	V	coming soon	-	-	-
18	40	215/40R18	89	W	coming soon	-	-	-
19	30	255/30R19	91	Y	coming soon	-	-	-
		265/30R19	93	W	coming soon	-	-	-
		275/30R19	96	Y	coming soon	-	-	-
	35	255/35R19	96	W	coming soon	-	-	-
	40	225/40R19	93	W	coming soon	-	-	-
		235/40R19	96	Y	coming soon	-	-	-
	55	235/55R19	105	W	coming soon	-	-	-
20	30	275/30R20	97	W	coming soon	-	-	-
	35	275/35R20	102	W	coming soon	-	-	-
	45	255/45R20	105	W	coming soon	-	-	-
21	30	325/30R21	108	W	coming soon	-	-	-
		35	285/35R21	105	W	coming soon	-	-
	40	255/40R21	102	W	coming soon	-	-	-
		275/40R21	107	W	coming soon	-	-	-
		295/40R21	111	W	coming soon	-	-	-
	45	315/40R21	115	W	coming soon	-	-	-
	45	275/45R21	110	W	coming soon	-	-	-
22	40	265/40R22	106	W	coming soon	-	-	-



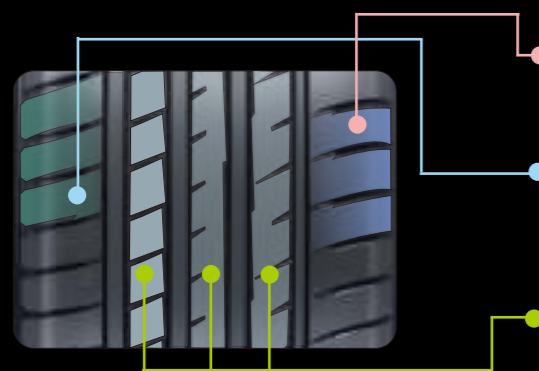
**TOP-LEVEL PROTECTION  
FOR UTMOST SAFETY**



**MA349**  
**Outstanding performance Safe and efficient**

Suitable for intermediate cars and limousines

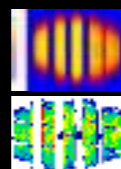
**SPORTmacro**



■ The inner side pattern is using various pitch design aims to lower the severity of pattern blocks, which will enhance the comfort performance. The cut-through between pattern blocks will enhance the control performance.

■ The outside shoulder pattern is using less quantity, wider pitch range as well as sealed and wider area design, which will increase the outside severity and contact area of the tire, making the control performance better.

■ Three wide range cut-through rib design can enhance the control performance, a large number of small steel sipes are used to break the ribs in order to lower the severity of the ribs and helps balance the comfort performance.



Using finite element simulation to optimize the outline of the tire in order to achieve the optimization shape of the tire and the balance of ground contact pressures, the higher content of white carbon black into the tread design formula is to ensure the control performance and comfort performance.



Inch:16-20  
Speed rating:V-W  
Series:30-55

**SPORTmacro**

**MA349**

Inch	Aspect Rating	Size	Load Index	Speed Rating	Section Width(mm)	Overall Diameter(mm)	Max Air Pressure(KPa)	Load Capacity(kg)
16	45	195/45R16	84/XL	V	195	582	290	500
		205/45ZR16	87/XL	W	206	590	290	545
	50	195/50R16	88/XL	V	201	602	290	560
		205/50ZR16	87	W	214	612	250	545
17	40	205/40ZR17	84/XL	W	212	596	290	500
		215/40ZR17	87/XL	W	218	604	290	545
		245/40ZR17	95/XL	W	248	628	290	690
	45	205/45ZR17	88/XL	W	206	616	290	560
		215/45ZR17	91/XL	W	213	626	290	615
		225/45ZR17	94/XL	W	225	634	290	670
		235/45ZR17	97/XL	W	236	644	290	730
		245/45ZR17	95	W	243	652	250	690
		255/45R17	102/XL	V	255	662	290	850
	50	205/50ZR17	93/XL	W	214	638	290	650
		215/50ZR17	95/XL	W	226	648	290	690
		225/50ZR17	98/XL	W	233	658	290	750
		235/50ZR17	100/XL	W	245	668	290	800
	55	205/55ZR17	95/XL	W	214	658	290	690
		215/55ZR17	98/XL	W	226	668	290	750
		225/55ZR17	101/XL	W	233	680	290	825
235/55ZR17		103/XL	W	245	690	290	875	
18	35	225/35ZR18	87/XL	W	230	615	290	545
		255/35ZR18	94/XL	W	260	635	290	670
		265/35ZR18	97/XL	W	271	643	290	730
	40	225/40ZR18	92/XL	W	230	637	290	630
		235/40ZR18	95/XL	W	241	645	290	690
		245/40ZR18	97/XL	W	248	653	290	730
		255/40ZR18	99/XL	W	260	661	290	775
	45	215/45ZR18	93/XL	W	213	651	290	650
		225/45ZR18	95/XL	W	225	659	290	690
		235/45ZR18	98/XL	W	236	669	290	750
		245/45ZR18	100/XL	W	243	677	290	800
	50	235/50ZR18	97	W	245	693	250	730
	55	215/55R18	95	V	226	693	250	690
		225/55R18	98	V	233	705	250	750
		235/55ZR18	100	W	245	715	250	800
		255/55R18	109/XL	V	265	737	290	1030
19	35	215/35ZR19	85/XL	W	218	633	290	515
		225/35ZR19	88/XL	W	230	641	290	560
		235/35ZR19	91/XL	W	241	647	290	615
		245/35ZR19	93/XL	W	248	655	290	650
	275/35ZR19	100/XL	W	278	675	290	800	
	40	245/40ZR19	98/XL	W	248	679	290	750
		255/40ZR19	100/XL	W	260	687	290	800
		275/40ZR19	101	W	278	703	250	825
45	225/45ZR19	96/XL	W	225	685	290	710	
	245/45ZR19	102/XL	W	243	703	290	850	
	275/45ZR19	108/XL	W	273	731	290	1000	
50	255/50ZR19	107/XL	W	265	739	290	975	
55	225/55R19	99	V	233	731	250	775	
20	30	225/30ZR20	85/XL	W	230	644	290	515
	35	225/35ZR20	90/XL	W	230	666	290	600
		245/35ZR20	95/XL	W	248	680	290	690
		255/35ZR20	102/XL	W	260	686	290	850
		315/35ZR20	110/XL	W	320	728	290	1060
	40	245/40ZR20	99/XL	W	248	704	290	775
		275/40ZR20	106/XL	W	278	728	290	950
	45	245/45ZR20	103/XL	W	243	728	290	875

**TOP-LEVEL PROTECTION,  
AND DRIVING HOME  
SAFELY**



**SPORT macro**

**MA346**

**Top-level Protection for Utmost Safety  
Outstanding performance Safe and efficient**

**Suitable for intermediate cars and limousines**

**SPORTmacro**

**MA346**

Inner tread Asymmetrical tread design Outer tread



[ Product Features ]

**DYNAMIC CONTROL**

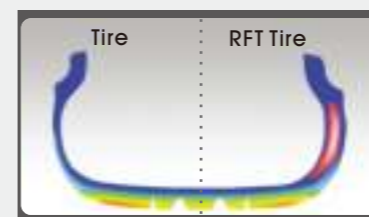
Narrow longitudinal centra thread provides more contact surface area.  
Good cornering capabilities with excellent control on dry surfaces.

**WATER EVACUATION TREAD**

Center staggered height on centra tread enhances wet grip.  
Internal tread improved water dispersion.

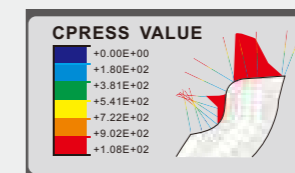
The sidewall using the advanced and non-deformable technology extremely enhance the compression properties, and effectively resist the deforming from the inside traction caused by all four tires leaking.

**WANLI sidewall support enhancement technology can keep a vehicle driving for a certain distance at a certain speed after tire pressure is lost . (when the pressure is reduced to 0 kPa, under a normal usage condition , the vehicle can drive for a distance between 80 km to 150 km at a speed of less than 80km/h).**



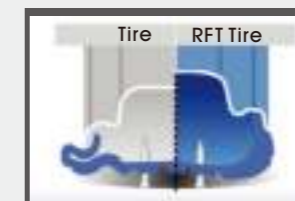
RFT technology(WANLI sidewall support enhancement technology)

It uses computer simulation system, and adopts advanced sidewall structure preventing deformation to increase anti-pressure performance of sidewall to the maximum, so that tire deformation caused by internal tension and traction due to air leakage of punctured tire can be effectively resisted.



**Optimized Tire Bead Part Design**

Optimally designed tire bead part can optimize the stress distribution between tire and rim, so as to effectively avoid tire unseating problem after a tire is lost.



**Special Sidewall Materials**

Originally creative rubber materials with excellent heat resistance are used to provide sufficient rigidity for sidewalls of tires, so as to prevent loss of vehicle control caused by pressure loss after a tire was punctured.

Inch	Aspect Rating	Size	Load Index	Speed Rating	Section Width(mm)	Overall Diameter(mm)	Max Air Pressure(KPa)	Load Capacity(kg)
17	45	225/45ZRF17	91	W	225	634	250	615
	50	225/50ZRF17	94	W	233	658	250	670
18	40	275/40ZRF18	99	W	278	677	250	775
	45	245/45ZRF18	96	W	243	677	250	710
	50	225/50RF18	95	V	233	683	250	690
		235/50RF18	97	V	245	693	250	730
19	50	255/50RF19	103	V	265	739	250	875
16	55	195/55RF16	87	V	coming soon	-	-	-
		205/55RF16	91	V	coming soon	-	-	-
		225/55RF16	95	V	coming soon	-	-	-
17	45	205/45RF17	84	W	coming soon	-	-	-
		205/50RF17	89	W	coming soon	-	-	-
	50	215/50RF17	91	V	coming soon	-	-	-
		225/55RF17	97	W	coming soon	-	-	-
		235/55RF17	99	W	coming soon	-	-	-



**TRAVEL AROUND THE CITY  
FREELY AND HAPPILY**

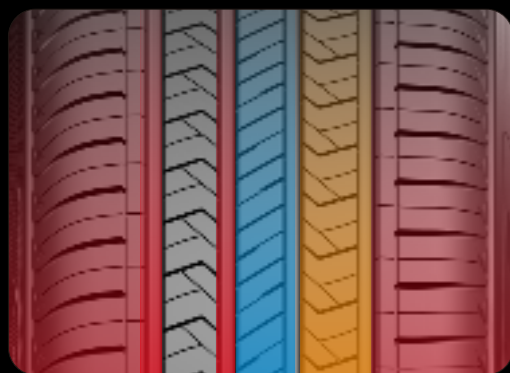


**MU069**

**QUIET AND COMFORTABLE PERFORMANCE ON  
DRY AND WET GROUNDS**

**Suitable for Urban SUV**

**SUV/4X4 SERIES HT**



**Inch:15-22  
Speed rating:T-W  
Series:30-75**

**QUIETER AND MORE COMFORTABLE EXPERIENCE**

The closed shoulder groove design helps to reduce the noise. The subsidiary groove design can reduce the rigidity of the pattern block, which provides comfortable performance. Optimized sequence structure can reduce the noise effectively.

**UPGRADED AND MORE ENVIRONMENTAL-FRIENDLY FORMULA**

Enhanced tire traction and reduced rolling resistance with the special high silicon formula.

**OUTSTANDING CONTROL ON DRY AND WET GROUNDS**

The shoulder pattern use thin chamfer design, which can prevent pebbles trapping conditions. The thin grooves on the tread provide excellent grip on the wet roads and handling stability. Four wide main grooves on the tread provide good water displacement and grip on the wet roads.

**RANGETOUR PLUS**

**MU069**

Inch	Aspect Rating	Size	Load Index	Speed Rating	Section Width(mm)	Overall Diameter(mm)	Max Air Pressure(KPa)	Load Capacity(kg)	
15	75	235/75R15	105	T	235	733	250	925	
16	60	235/60R16	100	V	240	688	250	800	
	70	215/70R16	100	H	221	708	250	800	
		225/70R16	103	H	228	722	250	875	
		235/70R16	106	H	240	736	250	950	
		245/70R16	107	H	248	750	250	975	
		265/70R16	112	T	272	778	250	1120	
275/70R16	114	T	279	792	250	1180			
17	60	215/60R17	96	H	221	690	250	710	
		215/60R17	96	V	221	690	250	710	
		225/60R17	99	H	228	702	250	775	
		225/60R17	99	V	228	702	250	775	
	65	235/60R17	102	H	240	714	250	850	
		225/65R17	102	V	228	724	250	850	
		235/65R17	104	H	240	738	250	900	
		245/65R17	111/XL	T	248	750	290	1090	
		265/65R17	112	T	272	776	250	1120	
	70	285/65R17	116	H	292	802	250	1250	
		245/70R17	110	T	248	776	250	1060	
		265/70R17	115	T	272	804	250	1215	
18	50	235/50ZR18	101/XL	W	245	693	290	825	
	55	225/55R18	98	V	233	705	250	750	
		235/55R18	100	V	245	715	250	800	
		225/60R18	104/XL	V	228	727	290	900	
	60	235/60R18	107/XL	V	240	739	290	975	
		245/60R18	105	H	248	751	250	925	
		265/60R18	110	H	272	775	250	1060	
		285/60R18	116	H	292	799	250	1250	
	65	265/65R18	114	H	272	801	250	1180	
		275/65R18	116	T	279	815	250	1250	
	70	255/70R18	113	T	260	815	250	1150	
		265/70R18	116	H	272	829	250	1250	
	19	40	235/40ZR19	96/XL	W	241	671	290	710
		55	235/55R19	101	V	245	741	250	825
20	40	275/40ZR20	106/XL	W	278	728	290	950	
	45	245/45ZR20	103/XL	W	243	728	290	875	
	50	285/50R20	116/XL	V	297	794	290	1250	
	55	235/55R20	102	V	245	766	250	850	
		275/55R20	117/XL	V	284	810	290	1285	
	60	275/60R20	115	H	279	838	250	1215	
21	30	285/30R21	100/XL	W	290	705	290	800	
	35	245/35R21	96/XL	W	248	705	290	710	
	45	265/45R21	104	W	266	771	250	900	
	50	275/50R21	113/XL	W	284	809	290	1150	
22	40	275/40ZR22	107/XL	W	278	779	290	975	
	45	285/45R22	114/XL	V	285	815	290	1180	
	50	275/50R22	111	V	284	835	250	1090	





THE WORLD IS YOUR  
PLAYGROUND



MU050

COMFORT, QUIETNESS & OUTSTANDING CONTROL

Suitable for mid-large SUV & off-road cars

SUV/4X4 SERIES AT

ALPINISM A/T

MU050

Inch	Aspect Rating	Size	Load Index	Speed Rating	Section Width(mm)	Overall Diameter(mm)	Max Air Pressure(KPa)	Load Capacity(kg)		
15	65	205/65R15	94	H	209	647	250	670		
	70	205/70R15	96	H	209	669	250	710		
	75	215/75R15LT	100/97	S	216	703	350	800		
		30×9.50R15LT	104	S	240	750	350	900		
		31×10.50R15LT	109	Q	268	775	350	1030		
16	60	205/60R16	92	H	209	652	250	630		
		235/60R16	100	V	240	688	250	800		
		235/70R16	106	S	240	736	250	950		
	70	245/70R16	111/XL	T	248	750	290	1090		
		255/70R16	111	T	260	764	250	1090		
		265/70R16	112	S	272	778	250	1120		
		275/70R16	114	S	279	792	250	1180		
	75	LT225/75R16	115/112	S	223	744	550	1215		
		LT245/75R16	108/104	S	248	774	350	1000		
		LT265/75R16	123/120	S	267	804	550	1550		
		LT285/75R16	126/123	R	286	834	550	1700		
	85	LT235/85R16	120/116	S	235	806	550	1380		
	17	65	225/65R17	102	T	228	724	250	850	
245/65R17			107	T	248	750	250	975		
265/65R17			112	S	272	776	250	1120		
275/65R17			115	S	279	790	250	1215		
285/65R17			116	S	292	802	250	1250		
70		LT265/70R17	121/118	S	272	804	550	1450		
		LT285/70R17	121/118	R	292	832	550	1450		
		18	55	225/55R18	102/XL	H	233	705	290	850
			60	225/60R18	104/XL	V	228	727	290	900
265/60R18	110			H	272	775	250	1060		
285/60R18	116	H		292	799	250	1250			
20	50	265/50R20	111/XL	V	277	774	290	1090		
		285/50R20	116/XL	H	297	794	290	1250		
	55	275/55R20	117/XL	H	284	810	290	1285		
16	70	225/70R16	103	T	coming soon	-	-	-		
17	75	LT245/75R17	121/118	S	coming soon	-	-	-		



Inch:15-20  
Speed rating:Q-V

**SPECIAL 3D WATER EVACUATION TREAD WITH ENHANCED STRUCTURE**

Prevents stress concentration on the tread and also prevents pebbles trapping conditions.

**INTERLEAVING SHOULDER TREAD PATTERN AND ARMOR SIDEWALL**

Guarantees exceptional control on wet and sandy road conditions, effectively avoid wearing during demanding road condition.

**POWERFUL DRAINAGE AND EXCELLENT WEAR**

Deeper and wider central grooves to ensure good drainage and mud removal.

Advanced abrasion resistant formula to ensure wear performance.

**TIGER-TEETH TREAD PATTERN**

Provides excellent grip with great mountain performance and off-road performance.



# New Generation All-Terrain Tyre (AT)

# MU169

**ALL-TERRAIN ABILITY  
FREELY DRIVES**



Inch	Aspect Rating	Size	Load Index	Speed Rating	Section Width(mm)	Overall Diameter(mm)	Max Air Pressure(KPa)	Load Capacity(kg)
15	70	255/70R15C	112/110	S	260	739	375	1120
16	70	205R16C	110/108	R	208	736	290	1215
		265/70R16	112	S	272	778	250	1120
		275/70R16	114	H	272	804	250	1215
17	65	265/65R17	112	T	272	776	250	1120
		275/65R17	115	H	279	790	250	1215
		285/65R17	116	H	292	802	250	1250
	70	265/70R17	115	S	272	804	250	1215
18	60	265/60R18	110	H	272	775	250	1060
		285/60R18	116	H	292	799	250	1250
20	55	265/55R20	113/XL	V	277	800	290	1150
16	80	205/80R16C	106/104	R	coming soon	-	-	-

## MU169

**LONG MILEAGE AND SUITABLE FOR VARIOUS ROAD CONDITIONS  
AND COMFORTABLE DRIVING EXPERIENCE**

**Suitable for Pick-up Trucks**

**SUV/4X4 SERIES AT**

### IMPROVED COMFORTABLE EXPERIENCE

**Tread:** Optimized pitch sequence arrangement, multi-pitch design for noise reduction. Numerous evenly distributed knife groove pattern design reduces the rigidity of tread pattern blocks and improves driving comfort.

**Tire shoulder:** Closed groove design on the shoulder reduces resonance of columnar airflow and noise.

### BETTER HANDLING ON VARIOUS ROAD CONDITIONS

Four wide zigzag-shaped grooves bring excellent water-displacement ability, evenly spread stress across the tread, improve traction on mud ground and reduce the chance of gravels being struck in the tread.

### STRONGER AND LONG MILEAGE

The tread uses materials and ingredients designed for good wear-resisting and anti-tearing performance, Thus the tread can defend against impacts from flying gravels and prolong tire's service life. Together with enhanced carcass and bead, tire's load-carrying capacity is greatly improved.



Inch:15-20  
Speed rating:R-V

# THE WORLD IS YOUR PLAYGROUND



## ECO SENDERO M/T2

GRIP DRIVE ANTI-TEAR OPERATION AND CONTROL ON DRY AND WET GROUNDS

Suitable for off-road cars

## MU149

SUV/4X4 SERIES MT

## ECO SENDERO M/T2

## MU149



[ Product Features ]

### EXCELLENT SELF-CLEANING ABILITY

Open shoulder pattern pieces ensure excellent self-cleaning ability and high traction of tires on gravel, muddy and other non-paved roads.

Three-layer carcass and strong steel wire belt structure enable tires to have higher skeleton intensity, and provide excellent operation and control performance and durability.

### TECHNOLOGY OF PREVENTING STONES FROM BEING EMBEDDED

Stones are prevented from being embedded in the central and side grooves to avoid external damages to tires and achieve steady operation and control.

### RIM PROTECTION DESIGN

Special tyre protection design is used to avoid damages to the rim.

### SHOULDER FRICTION PREVENTION LINE DESIGN

Three-layer carcass and strong steel wire belt structure enable tires to have higher skeleton intensity, and provide excellent operation, control performance and durability.

### EXCELLENT OFF-ROAD PERFORMANCE

Special rough pattern piece design enables tread pattern pieces to stretch into soil, gravel and wet grassland and play a strong grip in muddy and gravel roads and other harsh road conditions, so as to bring more outstanding off-road traction.

Inch	Aspect Rating	Size	Load Index	Speed Rating	Section Width(mm)	Overall Diameter(mm)	Max Air Pressure(KPa)	Load Capacity(kg)
15		30×9.50R15LT	104	Q	240	756	350	900
16	70	LT265/70R16	117/114	Q	coming soon	-	-	-
	75	LT245/75R16	108/104	Q	coming soon	-	-	-
		LT265/75R16	123/120	Q	coming soon	-	-	-
		LT285/75R16	126/123	R	coming soon	-	-	-
18	50	33×12.50R18LT	118	Q	coming soon	-	-	-
		35×12.50R18LT	118	Q	coming soon	-	-	-
	65	LT285/65R18	125/122	Q	coming soon	-	-	-
20	50	33×12.50R20LT	114	Q	coming soon	-	-	-
		35×12.50R20LT	121	Q	coming soon	-	-	-
		37×13.50R20LT	127	Q	coming soon	-	-	-
	65	LT275/65R20	126/123	Q	coming soon	-	-	-
22	50	33×12.50R22LT	109	Q	coming soon	-	-	-
		35×12.50R22LT	117	Q	coming soon	-	-	-
		37×13.50R22LT	123	K	coming soon	-	-	-
17	50	35×12.50R17LT	121	Q	coming soon	-	-	-
	65	LT265/65R17	120/117	Q	coming soon	-	-	-
	70	LT265/70R17	121/118	Q	coming soon	-	-	-
		LT285/70R17	121/118	R	coming soon	-	-	-
	LT295/70R17	121/118	Q	coming soon	-	-	-	
15	50	31×10.50R15LT	109	Q	coming soon	-	-	-
		32×11.50R15LT	113	Q	coming soon	-	-	-
		33×12.50R15LT	108	Q	coming soon	-	-	-
	75	LT235/75R15	104/101	S	coming soon	-	-	-
24	50	37×13.50R24LT	120	Q	coming soon	-	-	-



**EXCELLENT BEARING  
GREAT ENERGY-EFFICIENCY**

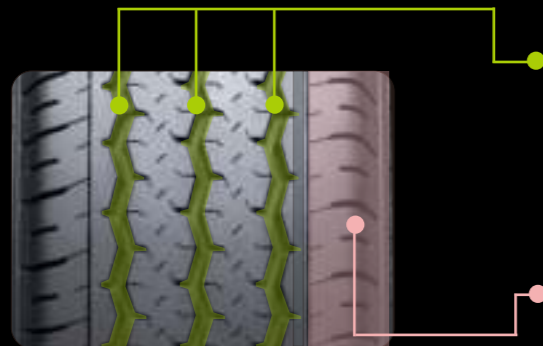


**ML150**

**SAFE DRIVING AND GREAT ENERGY-EFFICIENCY**

**Suitable For Commercial Light Trucks**

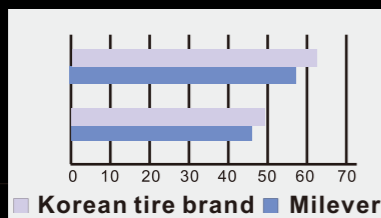
**LIGHT TRUCK SERIES**



■ The symmetrical ribs in the middle and the unique "Z"-shaped design not only enhance the rigidity of pattern, but also increase the ground contact area, which can optimize the driving and braking performance of the tire, making the braking distance shorter and drive safer in rainy days. Three longitudinal grooves on the tread provide excellent water displacement performance, which provide the tire outstanding control on wet grounds.

■ MILEVERT ML150 adopts a new environmental-friendly formula, which lower the energy consumption. More environmentally friendly design for goods transportation achieves "dual carbon" emission reduction.

Inch:12-16  
Speed rating:N-T



**Wet road braking distance/meter**  
Milevert:56.25 meters    Korean tire brand:61 meters

**Dry road braking distance/meter**  
Milevert:46.17 meters    Korean tire brand:49.17 meters

**LIGHT TRUCK SERIES**

**ML150**

Inch	Aspect Rating	Size	Load Index	Speed Rating	Section Width(mm)	Overall Diameter(mm)	Max Air Pressure(KPa)	Load Capacity(kg)
12		155R12C	88/86	N	157	553	450	560
13		175R13LT	97/95	R	177	610	450	730
14	70	175/70R14C	95/93	T	177	602	375	690
		165R14LT	96/95	T	165	620	450	710
		185R14C	102/100	R	188	650	450	850
		195R14C	106/104	R	198	666	450	950
15	70	195/70R15C	104/102	R	201	655	450	900
		205/70R15C	106/104	R	209	669	450	950
		215/70R15C	109/107	S	221	683	450	1030
		225/70R15C	112/110	R	228	697	450	1120
		195R15C	106/104	S	198	690	450	950
16	65	205/65R16C	107/105	T	209	672	475	975
		215/65R16C	109/107	T	221	686	475	1030
		225/65R16C	112/110	R	228	698	475	1120
		235/65R16C	115/113	T	240	712	475	1215
	70	215/70R16C	108/106	T	221	708	375	1000
		205/75R16C	113/111	R	203	714	525	1150
	75	215/75R16C	116/114	S	216	728	525	1250
		235/85R16LT	114/111	S	235	806	450	1180
13	70	165/70R13C	88/86	S	coming soon	-	-	-
14	65	175/65R14C	90/88	T	coming soon	-	-	-
	70	165/70R14C	89/87	R	coming soon	-	-	-
	75	175/75R14C	99/98	S	coming soon	-	-	-
15	65	185/65R15C	97/95	S	coming soon	-	-	-
		205/65R15C	102/100	T	coming soon	-	-	-
		215/65R15C	104/102	T	coming soon	-	-	-
16	60	195/60R16C	99/97	H	coming soon	-	-	-
		215/60R16C	108/106	T	coming soon	-	-	-
	65	195/65R16C	104/102	T	coming soon	-	-	-
	70	215/70R16C	108/106	T	coming soon	-	-	-
	75	185/75R16C	104/102	R	coming soon	-	-	-
		195/75R16LT	112/109	T	coming soon	-	-	-
		225/75R16C	121/120	R	coming soon	-	-	-
	85	235/85R16C	114/111	S	coming soon	-	-	-



# SAFE RIDE & ALL ROUND PERFORMANCE

ALL SEASON versat

MC545



## ALL SEASON versat MC545

NEW PATTERN DESIGNED FOR BALANCING PERFORMANCE AND QUIET DRIVING

### ALL SEASON SERIES



[ Product Features ]

Single directional pattern gives excellent stability at high speed, stronger snow evacuation and water drainage performance.

Narrow Circumferential groove and wider contact surface help to enhance tire grip and safety on wet roads.

Massive quantity of transverse grooves strengthen performance in snow evacuation, water drainage and other indexes including anti-wear, braking, controlling and noise.

Large quantity of tiny steel straps in the middle guarantee good performance on snow, small amount of steel design on the shoulder ensures excellent performance on dry and wet roads.

Double layer tread along with all season formula decreases rolling resistance, tire weight and optimizes performance on dry and wet roads.

Low noise design is achieved by noise optimization software with regard to pitch misalignment and sequence.

Inch	Aspect Rating	Size	Load Index	Speed Rating	Section Width(mm)	Overall Diameter(mm)	Max Air Pressure(KPa)	Load Capacity(kg)
13	70	155/70R13	75	T	157	548	250	387
	80	155/80R13	79	T	157	578	240	437
14	65	155/65R14	75	T	157	558	250	387
		175/65R14	82	T	177	584	250	475
	70	165/70R14	81	T	170	588	250	462
		175/70R14	88/XL	T	177	602	290	560
15	55	185/55R15	86/XL	H	194	585	290	530
	60	185/60R15	88/XL	H	189	603	290	560
		195/60R15	88	H	201	615	250	560
	65	175/65R15	84	H	177	609	250	500
		185/65R15	88	H	189	621	250	560
195/65R15	91	H	201	635	250	615		
16	55	195/55R16	91/XL	V	201	620	290	615
		205/55R16	94/XL	V	214	632	290	670
	60	205/60R16	96/XL	V	209	652	290	710
17	45	205/45ZR17	88/XL	W	206	616	290	560
		215/45ZR17	91/XL	W	213	626	290	615
		225/45ZR17	94/XL	W	225	634	290	670
		235/45ZR17	97/XL	W	236	644	290	730
		245/45ZR17	99/XL	W	243	652	290	775
	50	205/50ZR17	93/XL	W	214	638	290	650
		215/50ZR17	95/XL	W	226	648	290	690
		225/50ZR17	98/XL	W	233	658	290	750
	55	215/55ZR17	98/XL	W	226	668	290	750
		225/55ZR17	101/XL	W	233	680	290	825
		235/55ZR17	103/XL	W	245	690	290	875
	18	40	225/40ZR18	92/XL	W	230	637	290
45		225/45R18	95/XL	V	225	659	290	690
13	65	155/65R13	73	T	coming soon	-	-	-
		175/65R13	80	T	coming soon	-	-	-
	70	145/70R13	71	T	coming soon	-	-	-
		165/70R13	79	T	coming soon	-	-	-
175/70R13	82	T	coming soon	-	-	-		
14	55	185/55R14	80	H	coming soon	-	-	-
		165/60R14	79	H	coming soon	-	-	-
	60	185/60R14	82	H	coming soon	-	-	-
		165/65R14	79	T	coming soon	-	-	-
65	185/65R14	86	H	coming soon	-	-	-	
	50	195/50R15	82	V	coming soon	-	-	-
195/55R15		85	H	coming soon	-	-	-	
65		165/65R15	81	H	coming soon	-	-	-
	205/65R15	94	H	coming soon	-	-	-	
215/65R15	96	H	coming soon	-	-	-		
16	45	195/45R16	84	V	coming soon	-	-	-
		205/45R16	87	W	coming soon	-	-	-
		215/45R16	90	V	coming soon	-	-	-
	50	195/50R16	88	V	coming soon	-	-	-
		215/55R16	97	V	coming soon	-	-	-
		225/55R16	99	W	coming soon	-	-	-

# SAFE RIDE & ALL ROUND PERFORMANCE



## ALL SEASON versat

NEW PATTERN DESIGNED FOR BALANCING PERFORMANCE AND QUIET DRIVING

# MC557

ALL SEASON SERIES

## ALL SEASON versat

# MC557



### REINFORCED CARCASS, THE BETTER LOAD-BEARING PERFORMANCE

Designed for commercial light truck with double carcass structure, it has better load-bearing performance.

### SUPERIOR WETLAND PERFORMANCE AND SKID RESISTANCE

The tread groove design with S shapes on both sides and Z shapes in the middle can greatly enhance the tire drainage performance. The wide groove and asymmetrical pattern design bring excellent handling stability and outstanding drainage performance on the icy and wet roads.

### EXCELLENT FOUR SEASONS ADAPTABILITY PERFORMANCE

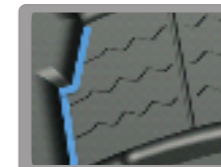
Bring excellent performance to the tire no matter in spring, summer, autumn or winter, by using a special all-season tire compound.



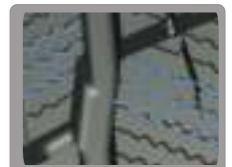
Pattern joint



The shape of groove like "T"



The difference between high and low at the edge of shoulder



The more close pattern groove

Inch	Aspect Rating	Size	Load Index	Speed Rating	Section Width(mm)	Overall Diameter(mm)	Max Air Pressure(KPa)	Load Capacity(kg)
15	70	195/70R15C	104/102	R	201	655	450	900
		215/70R15C	109/107	R	221	683	450	1030
		225/70R15C	112/110	R	228	697	450	1120
16	65	195/65R16C	104/102	T	201	660	475	900
		205/65R16C	107/105	R	209	672	475	975
		215/65R16C	109/107	R	221	686	475	1030
		225/65R16C	112/110	R	228	698	475	1120
	75	235/65R16C	115/113	R	240	712	475	1215
		195/75R16C	107/105	T	196	698	475	975
		215/75R16C	113/111	R	216	728	475	1150
		225/75R16C	121/120	R	223	744	575	1450
14	65	175/65R14C	90/88	T	coming soon	-	-	-
	70	175/70R14C	95/93	T	coming soon	-	-	-
16	60	195/60R16C	99/97	T	coming soon	-	-	-
		215/60R16C	103/101	T	coming soon	-	-	-
17	60	215/60R17C	109/107	T	coming soon	-	-	-

# BRAND NEW DESIGN AND EFFICIENT DRIVING



## Winter-max A1

SPECIAL PATTERN DESIGN ENABLES TO ENJOY  
FLEXIBLE OPERATION AND CONTROL ON ICY  
AND SNOWY ROADS.

## MW255

Suitable for icy and snowy roads



WINTER SERIES

## Winter-max A1

## MW255



[ Product Features ]



### NO SLIP ON SNOWY ROADS

Advanced piece-shape pattern design with special formula for ice and snow provides newly-developed tread with better flexibility and leads the contact area between tire and ground to become larger when tires are driven along a snowy road, so the snow grooves are not easy to be cut off, and tires can be provided with maximum force.

### BETTER OPERATION AND CONTROL PERFORMANCE

Asymmetric pattern design optimizes the performance of tires on dry and wet grounds and improves comprehensive operation and control of tires on icy and snowy roads.

### DRAINAGE AND SLIP RESISTANCE

Three longitudinal grooves designed on tread improve slip resistant performance on snowy roads in winter.

### HERRING BONE PATTERNS HAVE STRONGER GRIPS

Herringbone patterns being used have strong ice breaking and water drainage performance, large areas contacting grounds will ensure the characteristics of tires and enhance the traction on icy and snowy roads.

### MORE LASTING EFFECT

Wanli special formula for ice and snow can ensure that tires maintain great winter performance in the middle and late period of wearing.

Inch	Aspect Rating	Size	Load Index	Speed Rating	Section Width(mm)	Overall Diameter(mm)	Max Air Pressure(KPa)	Load Capacity(kg)
15	50	195/50R15	82	H	201	577	250	475
	55	185/55R15	86/XL	H	194	585	290	530
		195/55R15	85	H	201	595	250	515
16	55	195/55R16	87	H	201	620	250	545
		205/55R16	91	H	214	632	250	615
		205/55R16	91	T	214	632	250	615
		205/55R16	94/XL	H	214	632	290	670
		215/55R16	97/XL	H	226	642	290	730
	60	225/55R16	99/XL	H	233	654	290	775
		205/60R16	96/XL	H	209	652	290	710
		215/60R16	99/XL	H	221	664	290	775
		225/60R16	102/XL	H	228	676	290	850
		225/60R16	102/XL	T	228	676	290	850
		235/60R16	100	H	240	688	250	800
65	215/65R16	98	H	221	686	250	750	
17	45	215/45R17	91/XL	V	213	626	290	615
	45	225/45R17	94/XL	V	225	634	290	670
		235/45R17	97/XL	V	236	644	290	730
		50	205/50R17	93/XL	V	214	638	290

# MW255

# Winter-max A1

Inch	Aspect Rating	Size	Load Index	Speed Rating	Section Width(mm)	Overall Diameter(mm)	Max Air Pressure(KPa)	Load Capacity(kg)
17	50	215/50R17	95/XL	V	226	648	290	690
		225/50R17	98/XL	V	233	658	290	750
	55	205/55R17	95/XL	V	214	658	290	690
		215/55R17	98/XL	V	226	668	290	750
		225/55R17	101/XL	V	233	680	290	825
		235/55R17	103/XL	V	245	690	290	875
18	40	225/40R18	92/XL	V	230	637	290	630
		235/40R18	95/XL	V	241	645	290	690
		245/40R18	97/XL	V	248	653	290	730
	45	235/45R18	98/XL	V	236	669	290	750
	50	225/50R18	99/XL	V	233	683	290	775
	55	255/55R18	109/XL	V	265	737	290	1030
19	35	225/35R19	88/XL	V	230	641	290	560
		235/35R19	91/XL	V	241	647	290	615
		245/35R19	93/XL	V	248	655	290	650
		255/35R19	96/XL	V	260	661	290	710
	40	255/40R19	100/XL	V	260	687	290	800
	45	245/45R19	102/XL	V	243	703	290	850
20	35	315/35R20	110/XL	V	320	728	290	1060
		245/40R20	99/XL	V	248	704	290	775
	40	275/40R20	106/XL	V	278	728	290	950
		285/50R20	116/XL	H	297	794	290	1250
21	40	295/40R21	111/XL	V	301	769	290	1090



**SPECIAL FOR BEING USED IN WINTER, NO FEAR OF ICE AND SNOW**

# Winter-max U1

**STRONG GRIP, AND SUPER-STRONG SLIP RESISTANCE**

# MW655

Suitable for icy and snowy road conditions

 WINTER SERIES



# Winter-max U1

# MW655



[ Product Features ]

### NO SLIP ON SNOWY ROADS

Advanced piece-shape pattern design with formula special for ice and snow provides newly-developed tread with better flexibility and promotes touch down area of pattern pieces to turn bigger when tires are driven along a snow road, so that snow columns are not easy to be cut off, and tires can be provided with more powerful tire driving forces.

### MORE BALANCED PERFORMANCE

Symmetric pattern design and big shoulder pattern piece design, can produce lateral forces when tires are driven, improve traction on snowy and icy roads, significantly improve operation and control and braking performance, can increase driving precision on dry and wet roads to the maximum, and are more helpful to reduce driving noise.

### MORE LASTING EFFECT

Wanli special formula for ice and snow can ensure that tires maintain great winter performance in the middle and late period of wearing.

Inch	Aspect Rating	Size	Load Index	Speed Rating	Section Width(mm)	Overall Diameter(mm)	Max Air Pressure(KPa)	Load Capacity(kg)	
13	70	155/70R13	75	T	157	548	250	387	
		165/70R13	79	T	170	562	250	437	
		165/70R13	83/XL	T	170	562	290	487	
		175/70R13	82	T	177	576	250	475	
	80	155/80R13	79	T	157	578	240	437	
14	55	185/55R14	80	T	194	560	250	450	
		185/60R14	82	T	189	578	250	475	
	60	185/60R14	86/XL	T	189	578	290	530	
		175/65R14	82	T	177	584	250	475	
		175/65R14	86/XL	T	177	584	290	530	
	65	185/65R14	86	T	189	596	250	530	
		70	165/70R14	81	T	170	588	250	462
			165/70R14	85/XL	T	170	588	290	515
	175/70R14		84	T	177	602	250	500	
	175/70R14		88/XL	T	177	602	290	560	
		185/70R14	88	T	189	616	250	560	
15	55	185/55R15	86/XL	H	194	585	290	530	
		185/60R15	84	T	189	603	250	500	
	60	185/60R15	88/XL	T	189	603	290	560	
		195/60R15	88	T	201	615	250	560	
		185/65R15	88	T	189	621	250	560	
	65	195/65R15	91	H	201	635	250	615	
		195/65R15	91	T	201	635	250	615	
		195/65R15	95/XL	T	201	635	290	690	
		205/65R15	94	T	209	647	250	670	
		205/65R15	99/XL	T	209	647	290	775	
215/65R15		96	H	221	661	250	710		
16	55	205/55R16	91	T	214	632	250	615	

Focus the best performance .  
No fear of atrocious weather in winter



❄️ WINTER SERIES

# WINTER FORCE

# MW147

Suitable for commercial light truck in icy and snowy road conditions



### REINFORCED CARCASS, THE BETTER LOAD-BEARING PERFORMANCE

Designed for commercial light truck with double carcass structure, which has better load-bearing performance.

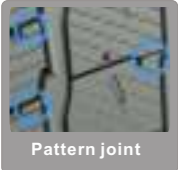
### SUPERIOR WETLAND PERFORMANCE AND SKID RESISTANCE

The tread groove design with S shapes on both sides and zigzag shape in the middle can greatly enhance the tire drainage performance. The wide groove and asymmetrical pattern design bring excellent handling stability and outstanding drainage performance on the icy and wet roads.

### SUPER-STRONG GRIP ON ICY AND SNOWY ROAD

The upgraded tread groove design can effectively strengthen the tire grip and brake performance, which ensures safety and stability while driving.

Excellent carrying capacity  
Superior wetland performance and  
skid resistance  
Super-strong grip on icy and snowy  
road



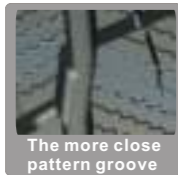
Pattern joint



The shape of  
groove like "T"



The difference  
between high and low  
at the edge of shoulder



The more close  
pattern groove

Inch	Aspect Rating	Size	Load Index	Speed Rating	Section Width(mm)	Overall Diameter(mm)	Max Air Pressure(KPa)	Load Capacity(kg)
14	70	165/70R14C	89/87	R	170	588	375	580
		185R14C	102/100	Q	188	650	450	850
15	70	195/70R15C	104/102	R	201	655	450	900
		215/70R15C	109/107	R	221	683	450	1030
		225/70R15C	112/110	R	228	697	450	1120
		195/65R16C	104/102	T	201	660	475	900
16	65	205/65R16C	107/105	R	209	672	475	975
		215/65R16	109	R	223	680	(空白)	(空白)
		215/65R16C	109/107	R	221	686	475	1030
		225/65R16C	112/110	R	228	698	475	1120
	75	235/65R16C	115/113	R	240	712	475	1215
		195/75R16C	107/105	T	196	698	475	975
		215/75R16C	113/111	R	216	728	475	1150
		225/75R16C	121/120	R	223	744	575	1450



# SAFE RIDE ON SNOW AND ICE

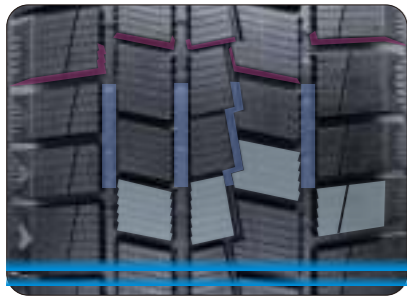
# WINTER CROSS

PRECISE OPERATION AND CONTROL  
SUPER-STRONG GRIP AND QUIETNESS

# MW356

Suitable for icy and snowy roads

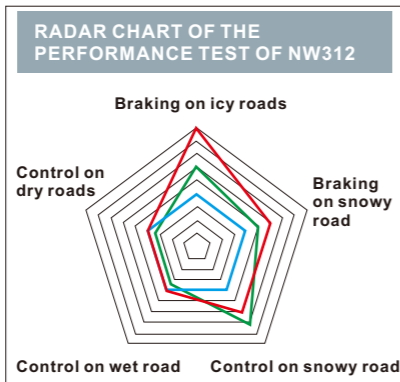
 WINTER SERIES



### [ Product Features ]

- 1
- 2
- 3
- 4

- 1 **■ Excellent braking performance**  
The reinforced bars and jagged design provide excellent braking performance that ensures safety in driving.
- 2 **■ Precise control**  
The wide groove and asymmetrical pattern design bring excellent handling stability and outstanding drainage performance on snowy and icy roads.
- 3 **■ Strong grip**  
The increased number of lugs and grooves on tread provide better snow traction and drainage performance, showing excellent grip capability on snowy and icy roads.
- 4 **■ Upgraded technology**  
The soft tread formula and enhanced sidewall stiffness comprehensively improve the performance of tires on snowy and icy roads.



Inch	Aspect Rating	Size	Load Index	Speed Rating	Section Width(mm)	Overall Diameter(mm)	Max Air Pressure(KPa)	Load Capacity(kg)	
13	60	175/60R13	77	Q	177	540	250	412	
	65	155/65R13	73	Q	157	532	250	365	
		165/65R13	77	Q	170	544	250	412	
	70	165/70R13	83/XL	Q	170	562	290	487	
		175/70R13	82	Q	177	576	250	475	
14	60	165/60R14	75	Q	170	554	250	387	
		175/60R14	79	Q	177	566	250	437	
		185/60R14	82	Q	189	578	250	475	
		195/60R14	86	Q	201	590	250	530	
	65	155/65R14	75	Q	157	558	250	387	
		175/65R14	82	Q	177	584	250	475	
		185/65R14	90/XL	Q	189	596	290	600	
	70	165/70R14	85/XL	Q	170	588	290	515	
		175/70R14	88/XL	Q	177	602	290	560	
		185/70R14	88	Q	189	616	250	560	
	15	55	185/55R15	86/XL	Q	194	585	290	530
			195/55R15	85	Q	201	595	250	515
60		185/60R15	84	Q	189	603	250	500	
		195/60R15	88	Q	201	615	250	560	
65		175/65R15	84	Q	177	609	250	500	
		185/65R15	88	Q	189	621	250	560	
		195/65R15	91	Q	201	635	250	615	
		205/65R15	94	Q	209	647	250	670	
70		205/70R15	96	Q	209	669	250	710	

Inch	Aspect Rating	Size	Load Index	Speed Rating	Section Width(mm)	Overall Diameter(mm)	Max Air Pressure(KPa)	Load Capacity(kg)
16	55	205/55R16	91	S	214	632	250	615
		215/55R16	97/XL	Q	226	642	290	730
		225/55R16	99/XL	Q	233	654	290	775
	60	195/60R16	89	Q	201	640	250	580
		205/60R16	92	Q	209	652	250	630
		215/60R16	99/XL	Q	221	664	290	775
		225/60R16	98	Q	228	676	250	750
	65	205/65R16	95	Q	209	672	250	690
		215/65R16	98	Q	221	686	250	750
	70	215/70R16	100	Q	221	708	250	800
17	45	235/45R17	97/XL	S	236	644	290	730
		255/45R17	102/XL	S	255	662	290	850
	50	215/50R17	95/XL	S	226	648	290	690
		225/50R17	98/XL	S	233	658	290	750
		235/50R17	100/XL	S	245	668	290	800
	55	215/55R17	94	S	226	668	250	670
		225/55R17	97	S	233	680	250	730
		235/55R17	103/XL	S	245	690	290	875
	60	215/60R17	96	S	221	690	250	710
		225/60R17	103/XL	S	228	702	290	875
		225/65R17	102	S	228	724	250	850
	65	235/65R17	104	S	240	738	250	900
		245/65R17	111/XL	S	248	750	290	1090
		265/65R17	112	S	272	776	250	1120
		265/65R17	112	S	272	776	250	1120
18	40	255/40R18	99/XL	S	260	661	290	775
	45	225/45R18	95/XL	S	225	659	290	690
		245/45R18	100/XL	S	243	677	290	800
	50	235/50R18	101/XL	S	245	693	290	825
	55	215/55R18	99/XL	S	226	693	290	775
		235/55R18	104/XL	S	245	715	290	900
	60	225/60R18	104/XL	S	228	727	290	900
		235/60R18	107/XL	S	240	739	290	975
		245/60R18	105	T	248	751	250	925
		265/60R18	114/XL	S	272	775	290	1180
65	235/65R18	106	T	240	763	250	950	
19	50	235/50R19	99	T	245	719	250	775
		255/50R19	103	T	265	739	250	875
	55	225/55R19	99	T	233	731	250	775
		235/55R19	101	T	245	741	250	825
		245/55R19	103	S	253	753	250	875
20	30	305/30R20	99	Q	313	692	250	775
	45	245/45R20	99	T	243	728	250	775
		275/45R20	110/XL	T	273	756	290	1060
	50	255/50R20	109/XL	H	265	764	290	1030
55	235/55R20	105/XL	S	245	766	290	925	
21	45	255/45R21	102	S	255	736	250	850
		265/45R21	104	T	266	771	250	900

**EXCELLENT GRIP ON ICY  
AND SNOWY ROADS ENABLE TO  
ENJOY FLEXIABLE  
OPERATION  
AND CONTROL IN WINTER**

**Winter-max S1**

**MW675**



**DESIGNED FOR ICY AND SNOWY ROAD CONDITIONS**

With optimized nail hole arrangement, the entire tire can be equipped with up to 200 snow nails (take 205/55R16 for example, depends on the size). The Inlaid nail anti-skid technology provides super-strong grip capability on snowy and icy roads.

**SINGLE-ORIENTED PATTERN**

Single-oriented pattern design provides effective water evacuation and exceptional wet performance in wet land. This obvious bump pattern designed on tread can improve skid resistance performance on snowy and icy conditions.

**MORE SUBTLE DESIGN CAN ENHANCE THE PERFORMANCE OF HANDLING AND BRAKING PERFORMANCE**

The pattern is shaped like lighting, with concave and convex shapes at the edge of the groove and sharp teeth shapes in the middle. The design provides efficient snow clearing and has significantly enhanced the operation and braking performance in snowy and icy conditions.

**Inlaid nail anti-skid technology and super-strong grip  
Excellent wetland performance and effectively prevent skidding  
Superior handing and braking performance**

Inch	Aspect Rating	Size	Load Index	Speed Rating	Section Width(mm)	Overall Diameter(mm)	Max Air Pressure(KPa)	Load Capacity(kg)
13	70	175/70R13	82	T	177	576	250	475
	80	155/80R13	83/XL	Q	157	578	280	487
		155/80R13	84/XL	N	157	578	280	500
14		185R14C	102/100	R	188	650	450	850
	60	185/60R14	82	T	189	578	250	475
	65	175/65R14	82	T	177	584	250	475
		175/65R14	86/XL	T	177	584	290	530
		185/65R14	86	T	189	596	250	530
15	60	185/60R15	84	T	189	603	250	500
	65	185/65R15	88	H	189	621	250	560
		195/65R15	91	T	201	635	250	615
		195/65R15	95/XL	T	201	635	290	690
16	55	205/55R16	91	H	214	632	250	615
		205/55R16	94/XL	T	214	632	290	670
	60	205/60R16	92	H	209	652	250	630
	65	215/65R16	102/XL	H	221	686	290	850
17	45	225/45R17	94/XL	H	225	634	290	670
	50	225/50R17	98/XL	H	233	658	290	750
		215/55R17	98/XL	H	226	668	290	750
	55	225/55R17	101/XL	H	233	680	290	825
		215/60R17	96	H	221	690	250	710
	60	225/60R17	103/XL	H	228	702	290	875
		225/65R17	102	T	228	724	250	850
65	235/65R17	104	T	240	738	250	900	
18	40	225/40R18	92/XL	H	230	637	290	630
	45	225/45R18	91	H	225	659	250	615
		225/45R18	95/XL	H	225	659	290	690
	55	225/55R18	102/XL	H	233	705	290	850
	60	225/60R18	104/XL	H	228	727	290	900
		235/60R18	107/XL	H	240	739	290	975
20	55	275/55R20	117/XL	H	284	810	290	1285

 **WINTER SERIES**

**Winter-max S1**

**MW675**

**Suitable for saloon car/SUV in icy and snowy road conditions**